

Austin

Standard Design | 241m² (25.9sq)



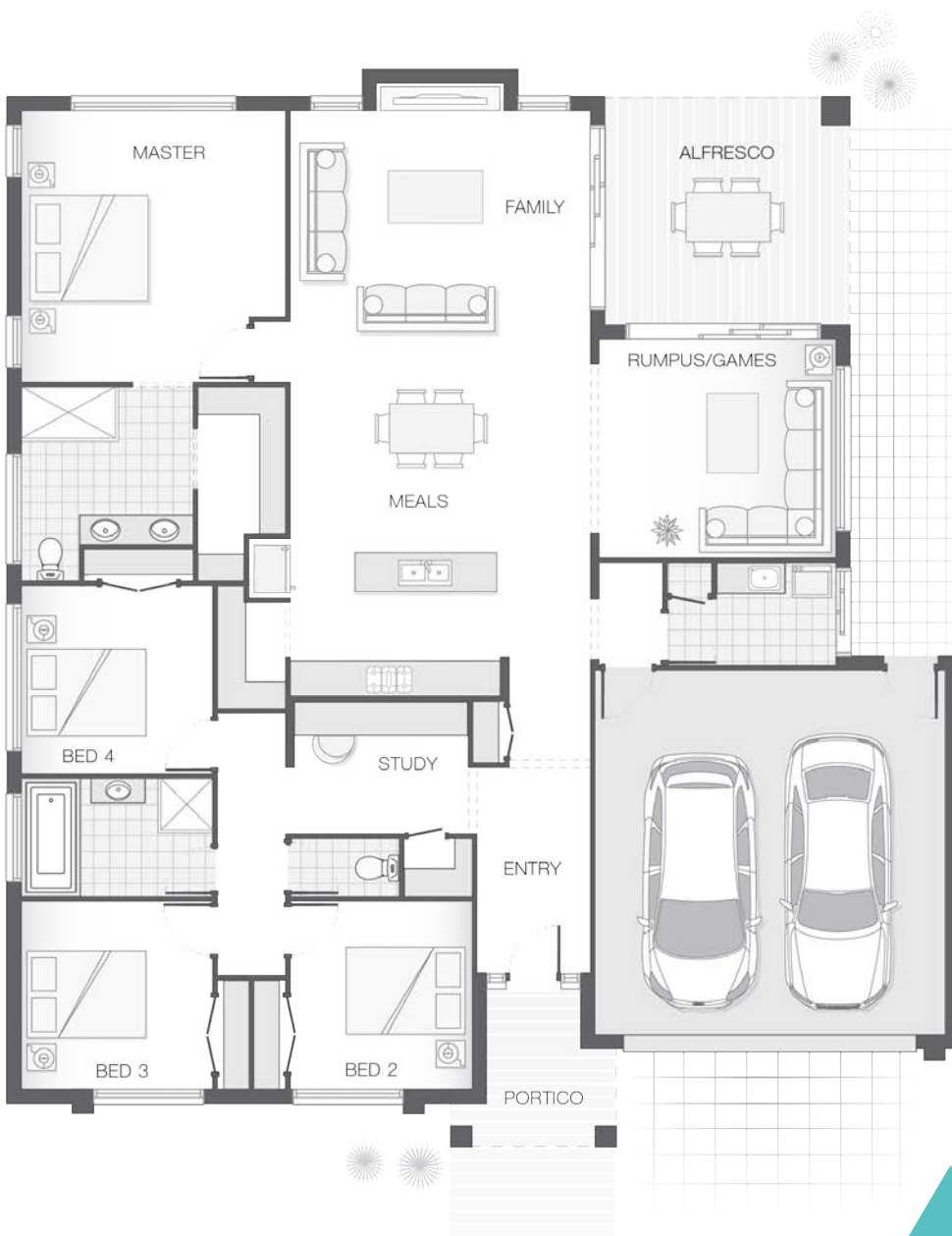
| BARCOMB FACADE

4 2 2

The Austin home design is the quintessential family home that has been designed for entertaining, family living and privacy alike.

The crafty design offers a central hub to the home where the kitchen, family, rumpus and dining spaces converge with the alfresco dining space, offering practicality and the ultimate entertaining zone.

The master retreat is well-appointed to offer luxury and privacy, while the bedroom wing includes a generous study nook.



KEY DIMENSIONS

Minimum Lot Width	18.0m
Length	17.7m
Width	15.7m

ROOM DIMENSIONS (m)

Meals	3.5 x 3.5
Family	4.9 x 3.6
Master Bedroom	4.3 x 4.5
Bedroom 2	3.0 x 3.1
Bedroom 3	3.1 x 3.1
Bedroom 4	3.1 x 3.1
Study	2.8 x 1.0
Rumpus/Games	3.9 x 3.6
Alfresco	4.0 x 3.8

FLOOR AREAS (m²)

Indoor Living	182.3
Garage	38.1
Alfresco	15.2
Portico	5.4

Available facade options for:

Austin, Baywood, Chelsea, Heydon, Iluka, Indigo, Penn and Sorrento home designs



Plans and designs depicted may change with facade selection. All drawings and images are for illustrative purposes only. This work is exclusively owned by AB Aust IP Pty Ltd (ACN 163 575 077) and cannot be reproduced or copied wholly or in part, in any form without the permission of AB Aust IP Pty Ltd. Any prices in this document include GST, relate only to the base home, do not include the supply of items such as landscaping and swimming pools and are subject to change. Minimum lot width is indicative only and is subject to local council regulations and setbacks, buyers should seek confirmation from their local council prior to making any decisions regarding home design on specific lots. For more details on pricing, home and land packages in your area, inclusions and how to start your story with Adenbrook Homes, please talk to a consultant at one of our many display homes or visit our website, adenbrookhomes.com.au.

adenbrook
homes