

Catarina

Standard Design | 179.0m² (19.3sq)



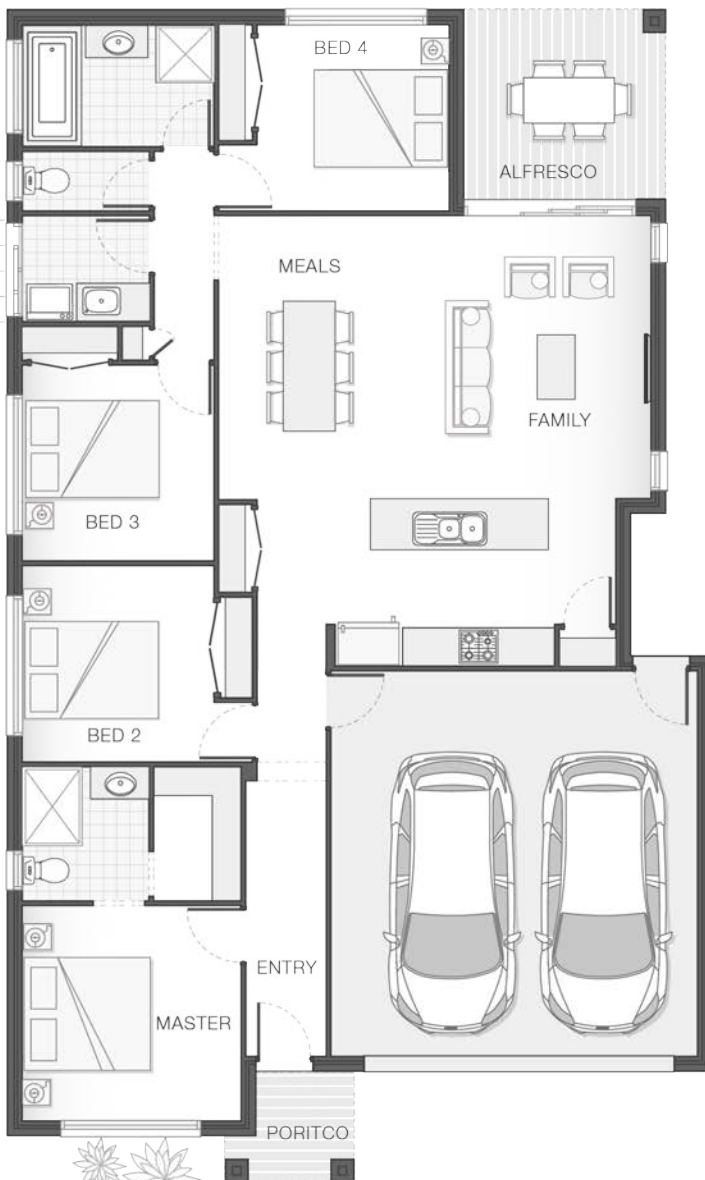
ATTLEY FACADE

4 2 2

The Catarina home design is fresh and vibrant and provides a stylish home for a growing family.

The entertaining zone presents an alfresco space that effortlessly integrates with the kitchen, family room and meals zones providing the ideal location for celebrations, relaxation and family dining all year round.

The generously proportioned master retreat offers an ensuite and walk-in-robe. The Catarina boasts separate living zones and communal areas that afford modern family living in comfort and style.



KEY DIMENSIONS

Minimum Lot Width	12.5m
Length	18.2m
Width	11.0m

ROOM DIMENSIONS (m)

Meals	2.7 x 3.5
Family	4.0 x 4.4
Master Bedroom	3.5 x 3.4
Bedroom 2	3.0 x 3.0
Bedroom 3	3.0 x 3.0
Bedroom 4	3.0 x 2.9
Alfresco	3.1 x 3.0

FLOOR AREAS (m²)

Indoor Living	129.5
Garage	37.2
Alfresco	9.3
Portico	3.0

Available facade options for:

Brampton, Willow, Catarina, Saxon, Keppel and Georgia home designs



PALLARA



ABBEY



ATTELEY



BEXLEY



BYRON



HAVEN



ENSLEY



KARIN



PENROSE



TAYLOR

Plans and designs depicted may change with facade selection. All drawings and images are for illustrative purposes only. This work is exclusively owned by AB Aust IP Pty Ltd (ACN 163 575 077) and cannot be reproduced or copied wholly or in part, in any form without the permission of AB Aust IP Pty Ltd. Any prices in this document include GST, relate only to the base home, do not include the supply of items such as landscaping and swimming pools and are subject to change. Minimum lot width is indicative only and is subject to local council regulations and setbacks, buyers should seek confirmation from their local council prior to making any decisions regarding home design on specific lots. For more details on pricing, home and land packages in your area, inclusions and how to start your story with Adenbrook Homes, please talk to a consultant at one of our many display homes or visit our website, adenbrookhomes.com.au.