

Chelsea

Standard Design | 213.4m² (23.0sq)



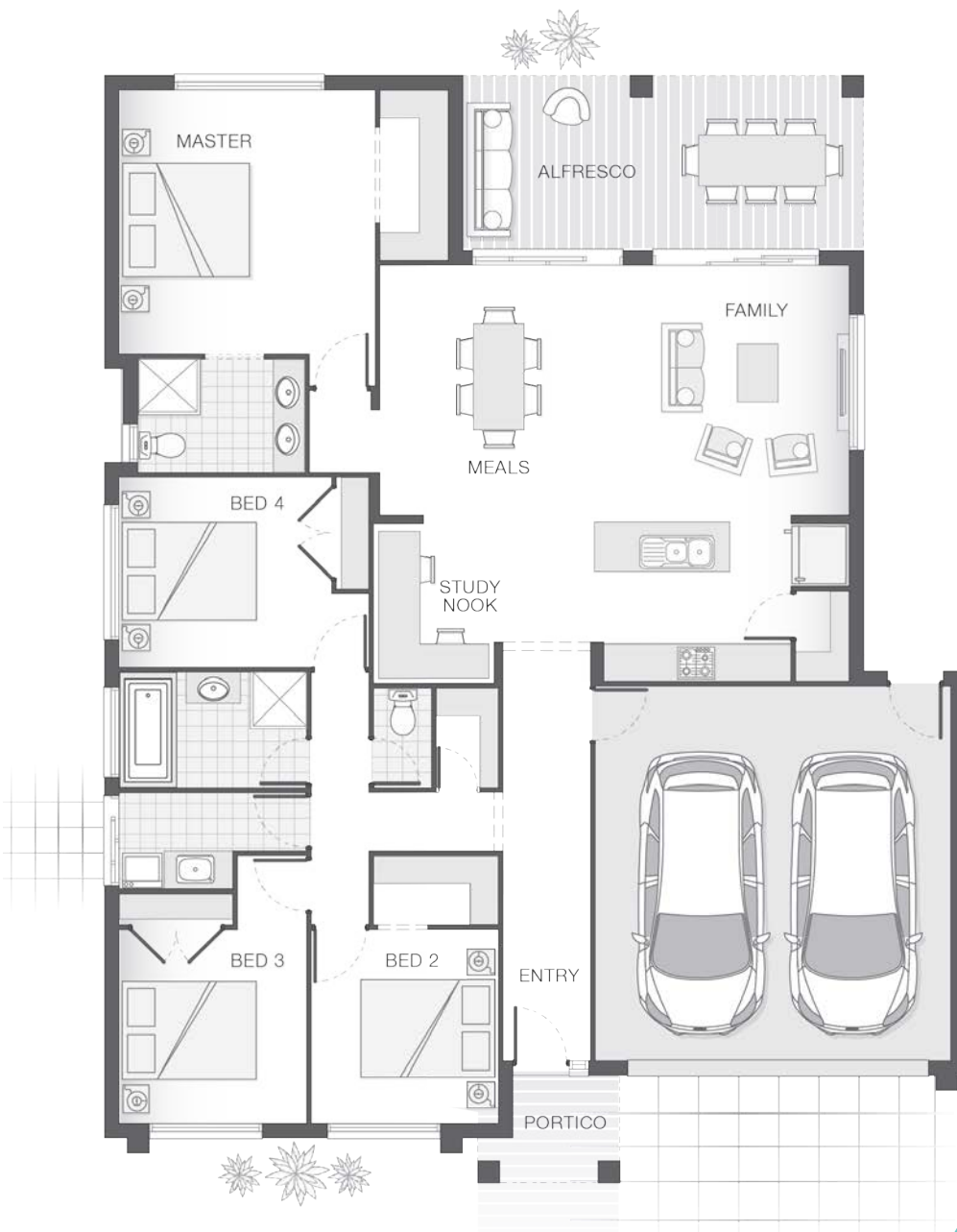
| BILSON FACADE

4 2 2

The Chelsea home design is modern, practical and versatile.

A real family home, the Chelsea features a central living zone with kitchen, meals and family room overlooking alfresco area with a convenient study nook, making homework a breeze.

The master retreat is complete with ensuite and walk-in-robe and is privately tucked away at the rear of the home. The additional bedrooms are all generous in size and are separate from the main living zones offering good separation and privacy.



KEY DIMENSIONS

Minimum Lot Width	16.0m
Length	17.7m
Width	13.8m

ROOM DIMENSIONS (m)

Meals	3.0 x 4.0
Family	4.5 x 4.0
Master Bedroom	4.1 x 4.2
Bedroom 2	3.0 x 3.1
Bedroom 3	3.0 x 3.1
Bedroom 4	3.4 x 3.0
Alfresco	6.4 x 2.8

FLOOR AREAS (m²)

Indoor Living	155.6
Garage	37.4
Alfresco	17.9
Portico	3.3

Available facade options for:

Austin, Baywood, Chelsea, Heydon, Iluka, Indigo, Penn and Sorrento home designs



BARCOMB



BEXLEY



BILSON



BYRON



HAVEN



HELANA



KALIA



KARIN



LACIE



LENNOX



PENROSE



TANSON



TAYLOR

Plans and designs depicted may change with facade selection. All drawings and images are for illustrative purposes only. This work is exclusively owned by AB Aust IP Pty Ltd (ACN 163 575 077) and cannot be reproduced or copied wholly or in part, in any form without the permission of AB Aust IP Pty Ltd. Any prices in this document include GST, relate only to the base home, do not include the supply of items such as landscaping and swimming pools and are subject to change. Minimum lot width is indicative only and is subject to local council regulations and setbacks, buyers should seek confirmation from their local council prior to making any decisions regarding home design on specific lots. For more details on pricing, home and land packages in your area, inclusions and how to start your story with Adenbrook Homes, please talk to a consultant at one of our many display homes or visit our website, adenbrookhomes.com.au.

adenbrook
homes