

# Demi

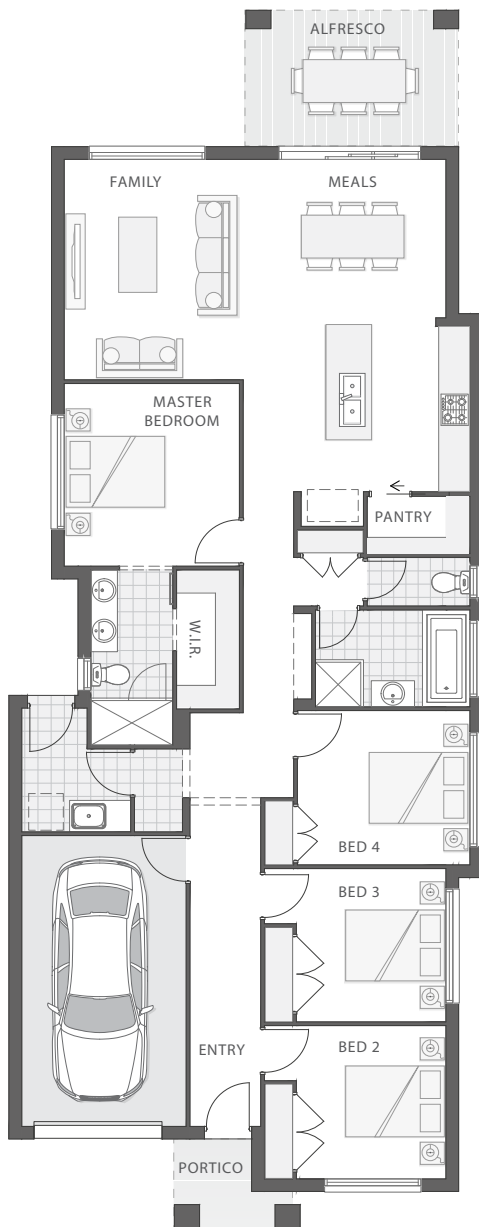
STANDARD DESIGN | 172.5m<sup>2</sup> (18.6sq)



The Demi home design is a petite and punchy home that combines convenience with practicality for the smaller lot.

In addition to the three bedrooms is a secluded and private master retreat that offers great separation from other living zones.

With ample entertaining space and a generous alfresco area, the Demi is ideal for enjoying our Australian lifestyle.



## KEY DIMENSIONS

Minimum Lot Width	10.0m
Length	23.2m
Width	8.9m

## ROOM DIMENSIONS (m)

Meals	3.2 x 3.2
Family	3.4 x 4.2
Master Bedroom	3.3 x 3.5
Bedroom 2	2.8 x 2.9
Bedroom 3	2.8 x 2.9
Bedroom 4	3.2 x 2.9
Alfresco	4.0 x 2.6

## FLOOR AREAS (m<sup>2</sup>)

Indoor Living	139.7
Alfresco	10.4
Garage	19.3
Portico	3.2



# Available facade options for:

DEMI HOME DESIGN



PALLARA



BEXLEY



BYRON



HAVEN



KARIN



TAYLOR

This work is exclusively owned by AB Aust IP Pty Ltd (ACN 163 575 077) and cannot be reproduced or copied wholly or in part, in any form without the permission of AB Aust IP Pty Ltd. Plans and designs depicted may change with facade selection. Facade render is indicative and may change with home design. All drawings and images are for illustrative purposes only and rounding has been used. Any prices in this document include GST, relate only to the base home, do not include the supply of items such as landscaping and swimming pools and are subject to change. Minimum lot width is indicative only and is subject to local council regulations and setbacks, buyers should seek confirmation from their local council prior to making any decisions regarding home design on specific lots.

For more details on pricing, home and land packages in your area, inclusions and current offers, please talk to a consultant at one of our many display homes or visit our website, [adenbrookhomes.com.au](http://adenbrookhomes.com.au).