

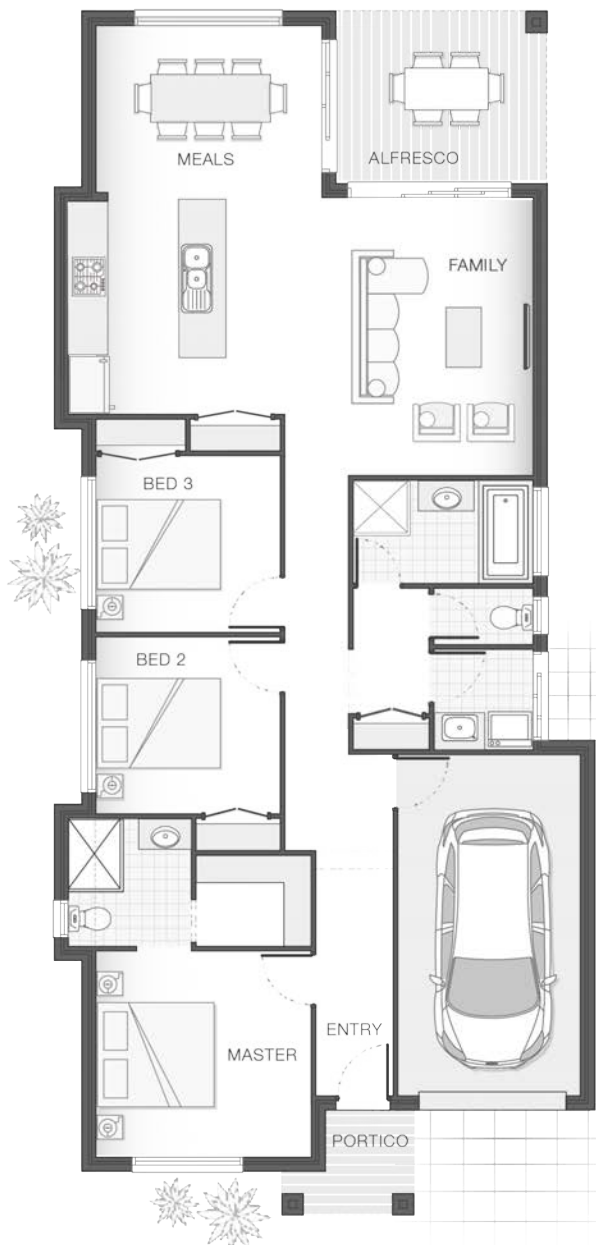
Ellis

Standard Design | 151.8m² (16.3sq)



The Ellis home design encapsulates fresh family living in a sleek and compact design. Offering an appealing layout that features open plan living, dining and kitchen space that flows to the alfresco area, entertaining in this space is a breeze.

The master retreat complete with ensuite and walk-in-robe gives a feeling of spaciousness and sophistication while the additional bedrooms have easy access to the second bathroom and direct entry into the main living space, ensuring the entire family live in comfort and style.



KEY DIMENSIONS

Minimum Lot Width	10.0m
Length	19.7m
Width	8.9m

ROOM DIMENSIONS (m)

Meals	3.7 x 2.8
Family	3.4 x 4.5
Master Bedroom	3.5 x 3.4
Bedroom 2	3.0 x 2.9
Bedroom 3	3.0 x 2.9
Alfresco	3.4 x 2.8

FLOOR AREAS (m²)

Indoor Living	120.0
Garage	19.0
Alfresco	9.8
Portico	3.0

Available facade options for:

Kyle, Dawson, Ellis and Macleay home designs



PALLARA



ABBEY



ATTELY



BEXLEY



BYRON



TAYLOR



ENSLEY



KARIN



PENROSE

Plans and designs depicted may change with facade selection. All drawings and images are for illustrative purposes only. This work is exclusively owned by AB Aust IP Pty Ltd (ACN 163 575 077) and cannot be reproduced or copied wholly or in part, in any form without the permission of AB Aust IP Pty Ltd. Any prices in this document include GST, relate only to the base home, do not include the supply of items such as landscaping and swimming pools and are subject to change. Minimum lot width is indicative only and is subject to local council regulations and setbacks, buyers should seek confirmation from their local council prior to making any decisions regarding home design on specific lots. For more details on pricing, home and land packages in your area, inclusions and how to start your story with Adenbrook Homes, please talk to a consultant at one of our many display homes or visit our website, adenbrookhomes.com.au.