

adenbrookhomes

The Baywood

ON DISPLAY WITH LENNOX FACADE

1 ANGLER COURT, BONVILLE NSW 2450



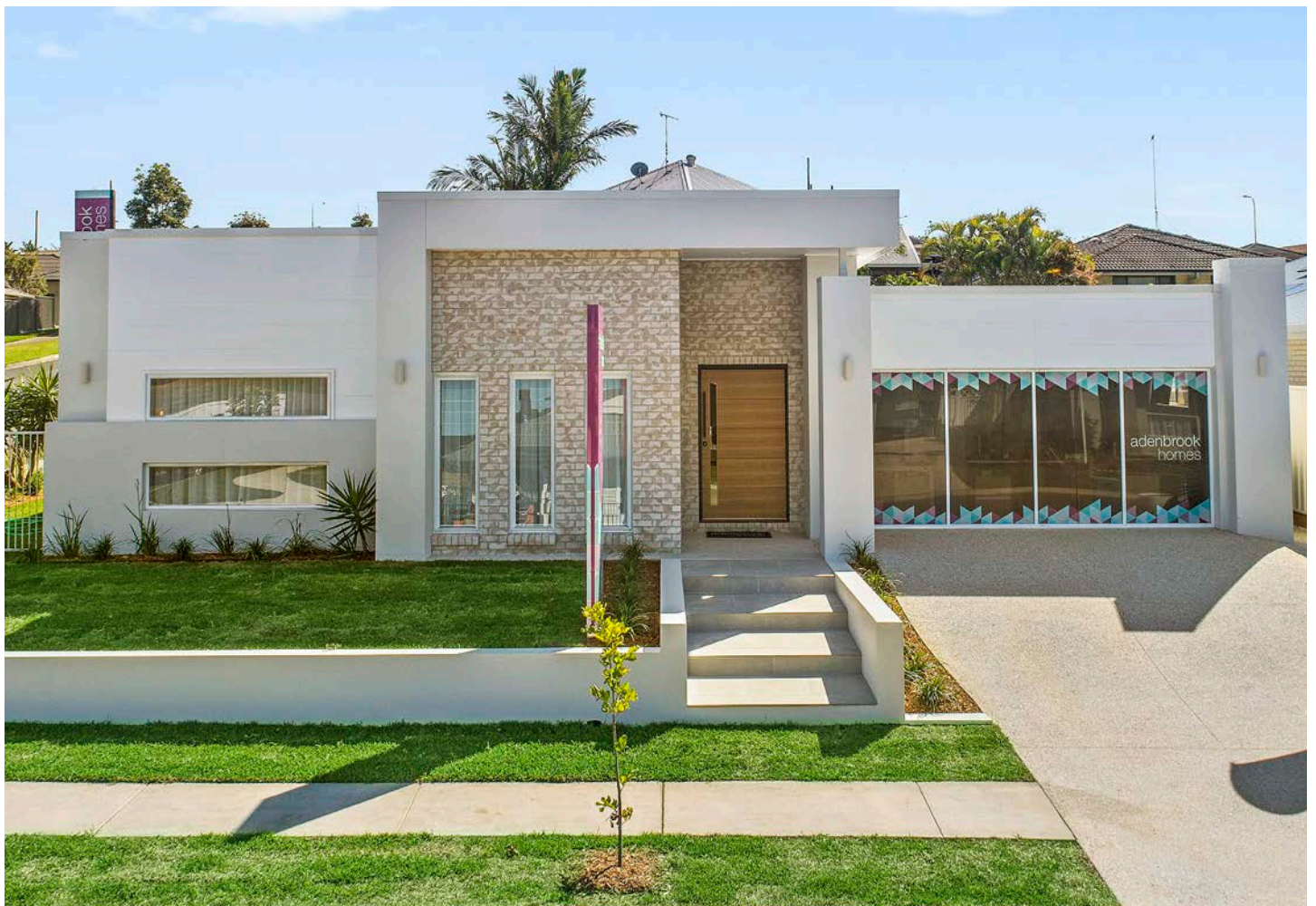
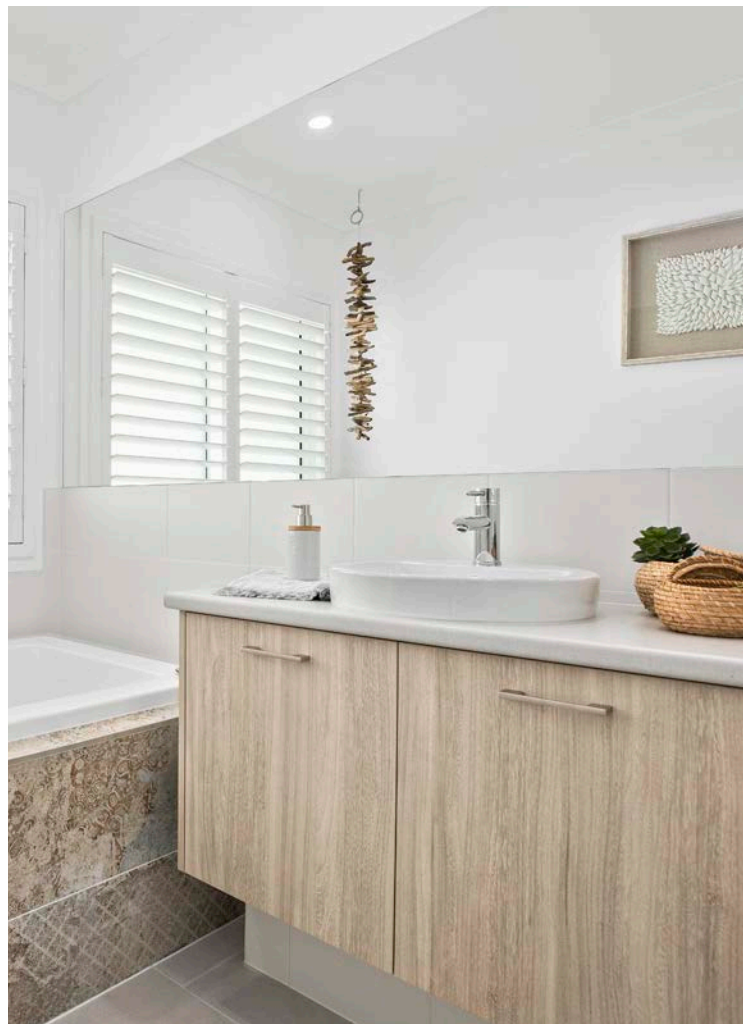
THE BAYWOOD | Home on Display

The Baywood home design is equally as stylish as it is tasteful. The contemporary Lennox Façade presents eye-catching street appeal, insightful design flair and contemporary details.

The layout affords privacy and separation while also offering a central heart of the home which is comprised of kitchen, dining and alfresco space ideal for entertainment, enjoyment and relaxation.

The master retreat with ensuite and walk-in-robe is expansive and provides the perfect haven to escape to for quiet moments.

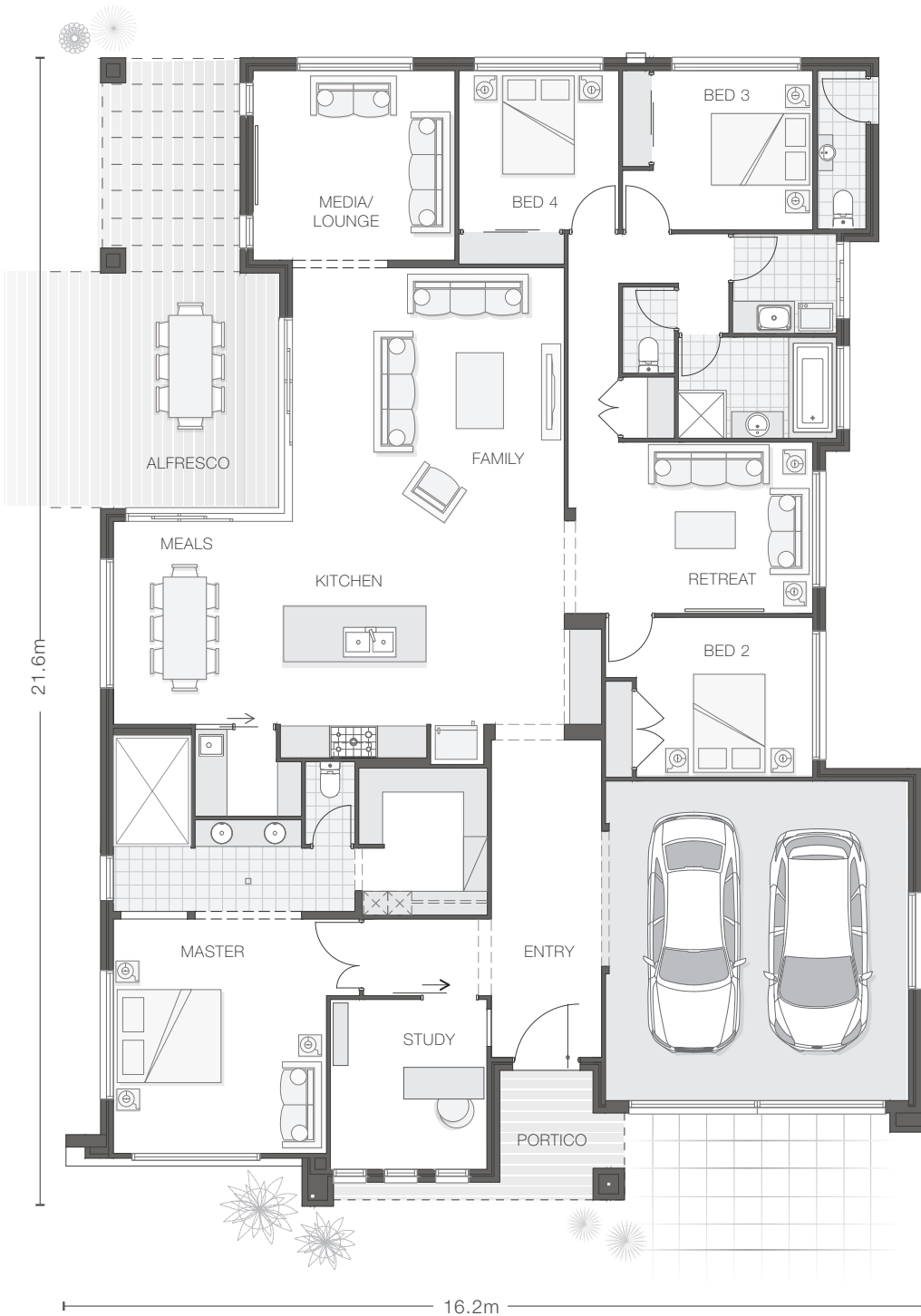
Featuring a luxurious coastal bohemian theme, The Baywood is a visually pleasing and functional home design that is perfect for today's lifestyle needs.





The Baywood

Home on Display with Lennox Facade 291.1m² | 31.3sq



KEY FEATURES

- Feature skylights throughout
- Private and spacious master retreat with walk-in-robe and ensuite
- Open plan living areas with multiple separate living zones
- Ducted air-conditioning throughout
- Practical separate office space
- Coastal inspired facade and style

KEY DIMENSIONS

Minimum Lot Width	18.0m
Length	21.6m
Width	16.2m

ROOM DIMENSIONS (m)

Meals	3.1 x 3.8
Family	5.1 x 4.8
Master Bedroom	4.0 x 4.4
Bedroom 2	3.3 x 3.0
Bedroom 3	3.0 x 3.0
Bedroom 4	3.0 x 3.0
Media/Lounge	3.8 x 3.7
Retreat	4.4 x 3.3
Study	2.9 x 3.2
Alfresco	3.3 x 4.9

FLOOR AREAS (m²)

Indoor Living	231.0
Alfresco	16.1
Garage	37.8
Portico	6.2

Minimum lot width is indicative only and is subject to local council regulations and setbacks, buyers should seek confirmation from their local council prior to making any decisions regarding home design on specific lots. This display includes lifestyle options which highlight features in the design. Speak with a consultant about how you can customise the base plan to suit your lifestyle.