

adenbrookhomes

The Demi

On Display with Karin Facade

17-19 NOAH STREET, BOX HILL NSW 2765



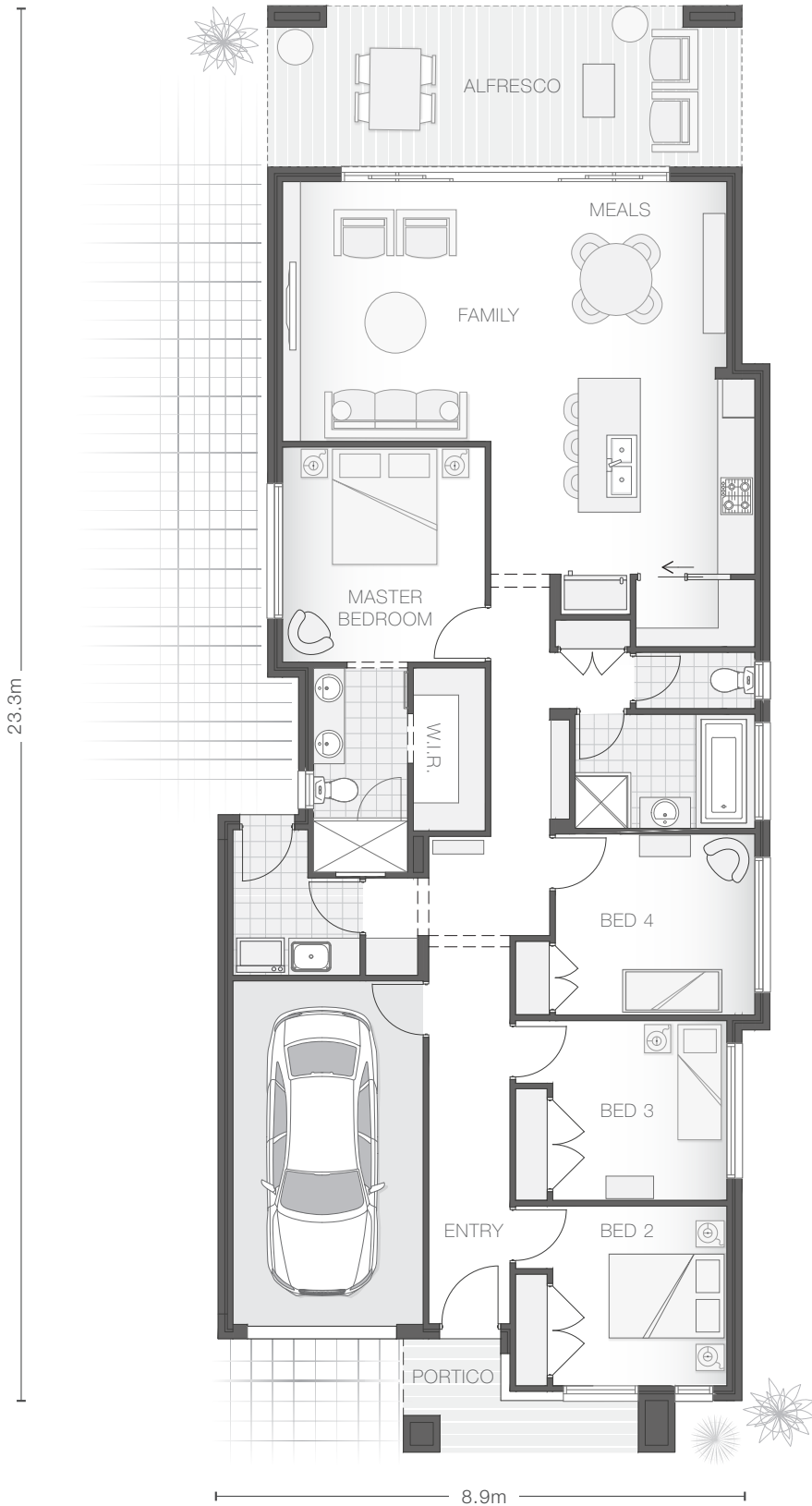
THE DEMI | Home on Display

The Demi home design is a petite and punchy home that combines convenience with practicality for the smaller lot. In addition to the three bedrooms is a secluded and private master retreat that offers great separation from other living zones. With ample entertaining space and a generous alfresco area, the Demi is ideal for enjoying our Australian lifestyle.



The Demi

Home on Display with Karin Facade 184.0m² | 19.8sq



KEY FEATURES

- Low-profile roof tiles, detailed mixed-batten cladding in a statement colour
- Kitchen features concrete-look benchtops, distinctive deep-olive cabinetry and white subway tiled splashback
- Built-in cabinetry to the hallway and living areas, maximising storage
- Stained timber entry door, San-Selmo reclaimed brick as a unique feature
- Marlow feature tile used in the bathroom and ensuite emulates the look of traditional handmade tiles

KEY DIMENSIONS

Minimum Lot Width	10.0m
Length	23.3m
Width	8.9m

ROOM DIMENSIONS (m)

Meals	3.2 x 3.5
Family	4.2 x 3.7
Master Bedroom	3.5 x 3.3
Bedroom 2	2.8 x 2.9
Bedroom 3	2.8 x 2.9
Bedroom 4	2.9 x 3.2
Alfresco	2.6 x 7.6

FLOOR AREAS (m²)

Indoor Living	140.2
Garage	19.2
Alfresco	19.9
Portico	4.7

This display includes lifestyle options which highlight features in the design. Speak with a consultant about how you can customise the base plan to suit your lifestyle.