

adenbrookhomes

The Isla A

On Display with Haven Facade

10 WHISTLER STREET, WONGAWILLI, NSW 2530



THE ISLA A | Home on Display

The Isla home design is sophisticated and stylish, offering all the modern features that you need to relax, entertain and enjoy! The outdoor entertaining area runs the width of the home and flawlessly integrates with the family room, meals area and generous kitchen complete with butler's pantry creating an oversized entertainers delight.

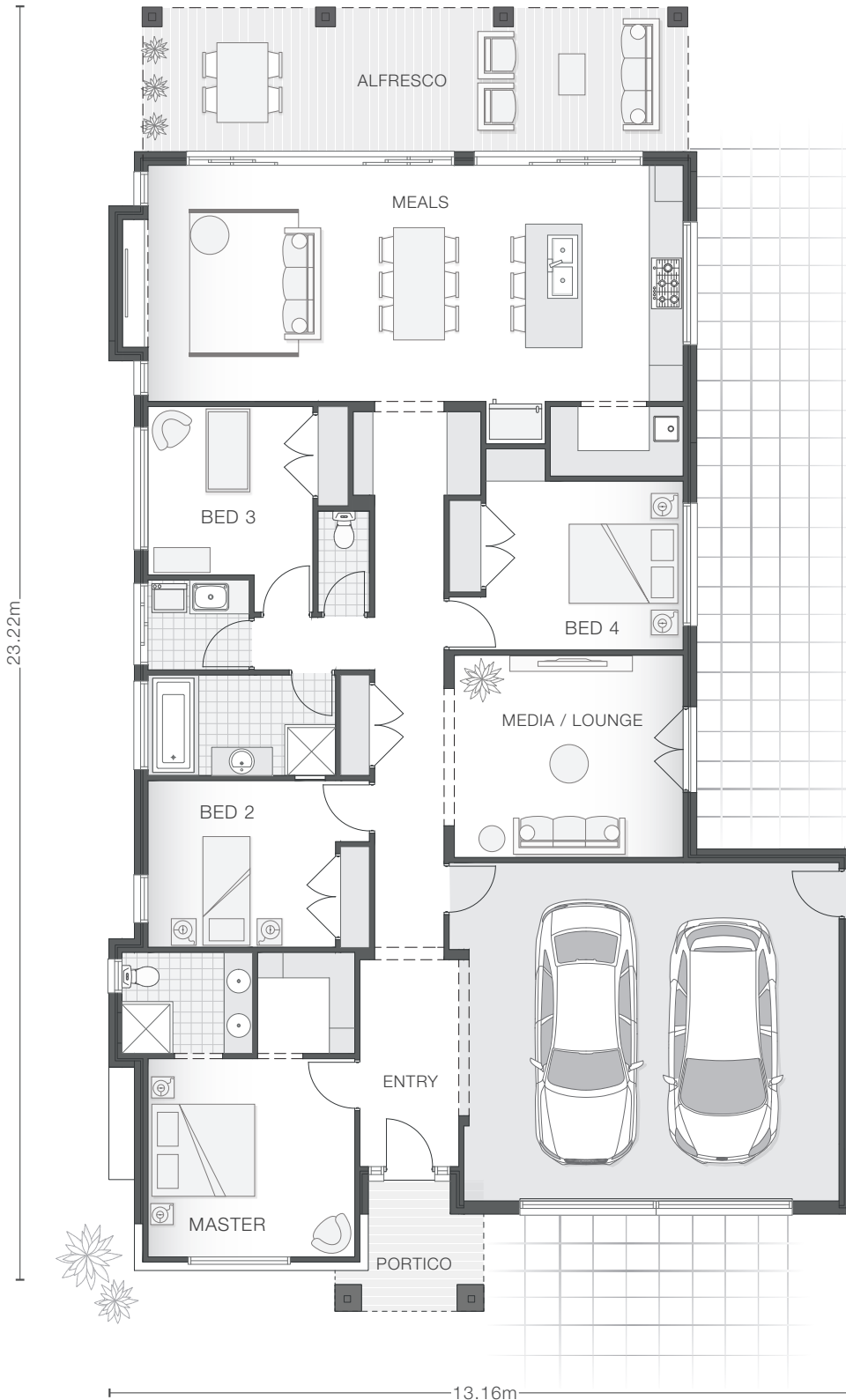
The master retreat with ensuite and walk-in-robe boasts great separation while the central living zone is dedicated to additional bedrooms and the media room.



The Isla A

Home on Display with Haven Facade 242.1m² | 26.0sq

4  2  2 



KEY FEATURES

- Hampton inspired Haven facade showcasing slate-look low profile roof tiles
- Herringbone paved driveway and an inviting tonal colour palette
- A combination of VJ wall panelling and wainscot detailing
- Full height marble wall tiles and decadent patterned floor tiles in master ensuite
- Kitchen features stone benchtops, custom 2-pac shaker profile cabinetry
- American oak stained entry door

KEY DIMENSIONS

Minimum Lot Width	15.0m
Length	23.22m
Width	13.16m

ROOM DIMENSIONS (m)

Meals	3.0 x 4.2
Family	3.6 x 4.2
Master Bedroom	3.7 x 3.5
Bedroom 2	3.3 x 2.9
Bedroom 3	2.9 x 3.0
Bedroom 4	3.5 x 3.0
Media/Lounge	4.1 x 3.6
Alfresco	10.0 x 2.7

FLOOR AREAS (m²)

Indoor Living	166.4
Garage	44.0
Alfresco	26.9
Portico	4.8

This display includes lifestyle options which highlight features in the design. Speak with a consultant about how you can customise the base plan to suit your lifestyle.

adenbrookhomes