

Orion

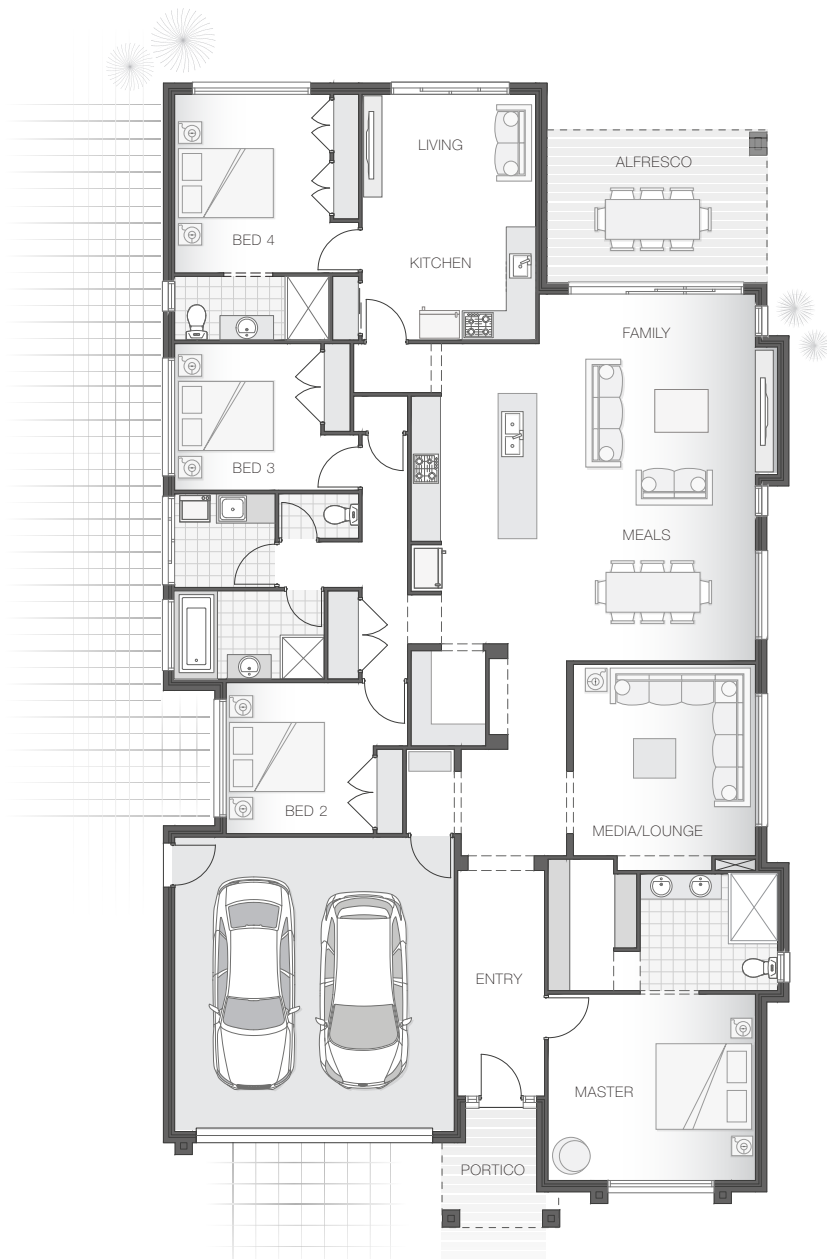
Option C | 269.6m² (29.3sq)



| KALIA FACADE

4 2 2

The Orion C home design is ideal for multi-generational living, offering a layout designed for large family living. Separate living zones ensure peace and privacy for the whole family with a parent's retreat situated at the front of the home, while remaining bedrooms are aligned along the opposing side of the home. The integrated meals, family and dining room flow seamlessly to the alfresco area, while the cleverly appointed fully serviced fourth bedroom is set to the rear of the home and ideal for extended family or guests.



KEY DIMENSIONS

Minimum Lot Width	15.0m
Length	23.3m
Width	12.8m

ROOM DIMENSIONS (m)

Meals	3.8 x 3.0
Family	4.5 x 4.5
Master Bedroom	4.2 x 3.8
Bedroom 2	3.0 x 3.1
Bedroom 3	3.0 x 3.0
Bedroom 4	3.2 x 3.6
Living	3.5 x 2.8
Media/Lounge	3.7 x 3.9
Alfresco	4.5 x 3.1

FLOOR AREAS (m²)

Indoor Living	213.7
Garage	37.4
Alfresco	13.8
Portico	4.7

Available facade options for:

Orion, Amity, Cebel, Fraser and Isla home designs



Plans and designs depicted may change with facade selection. All drawings and images are for illustrative purposes only. This work is exclusively owned by AB Aust IP Pty Ltd (ACN 163 575 077) and cannot be reproduced or copied wholly or in part, in any form without the permission of AB Aust IP Pty Ltd. Any prices in this document include GST, relate only to the base home, do not include the supply of items such as landscaping and swimming pools and are subject to change. Minimum lot width is indicative only and is subject to local council regulations and setbacks, buyers should seek confirmation from their local council prior to making any decisions regarding home design on specific lots. For more details on pricing, home and land packages in your area, inclusions and how to start your story with Adenbrook Homes, please talk to a consultant at one of our many display homes or visit our website, adenbrookhomes.com.au.