

Orion

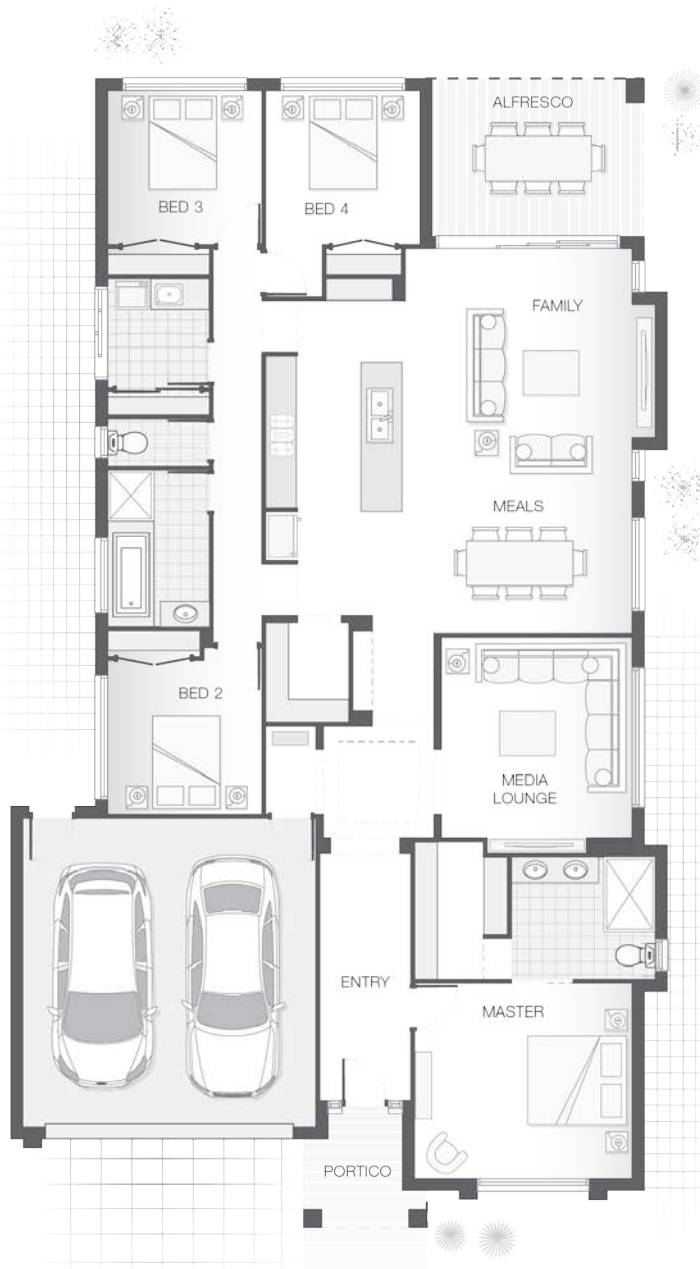
Standard Design | 241.3m² (26sq)



The Orion home design combines functionality with visual appeal and is the epitome of open plan living.

Carefully appointed, the master retreat with ensuite and walk-in-robe has good separation from the other bedrooms which is ideal for both privacy and functionality for the entire family.

The kitchen, meals and family zones integrate flawlessly to create a central hub, flowing between indoor and outdoor living to suit our Australian lifestyle.



KEY DIMENSIONS

Minimum Lot Width	14.0m
Length	22.3m
Width	12.8m

ROOM DIMENSIONS (m)

Meals	3.8 x 3.0
Family	4.5 x 4.5
Master Bedroom	4.2 x 3.8
Media Lounge	3.7 x 3.9
Bedroom 2	3.0 x 3.0
Bedroom 3	3.0 x 3.0
Bedroom 4	3.0 x 3.0
Alfresco	4.1 x 3.1

FLOOR AREAS (m²)

Indoor Living	186.4
Garage	37.6
Alfresco	12.6
Portico	4.7

Available facade options for:

Orion, Amity, Cebel, Fraser, Alexander and Isla home designs



Plans and designs depicted may change with facade selection. All drawings and images are for illustrative purposes only. This work is exclusively owned by AB Aust IP Pty Ltd (ACN 163 575 077) and cannot be reproduced or copied wholly or in part, in any form without the permission of AB Aust IP Pty Ltd. Any prices in this document include GST, relate only to the base home, do not include the supply of items such as landscaping and swimming pools and are subject to change. Minimum lot width is indicative only and is subject to local council regulations and setbacks, buyers should seek confirmation from their local council prior to making any decisions regarding home design on specific lots. For more details on pricing, home and land packages in your area, inclusions and how to start your story with Adenbrook Homes, please talk to a consultant at one of our many display homes or visit our website, adenbrookhomes.com.au.

adenbrook
homes