

# Penn

STANDARD DESIGN | 315.2m<sup>2</sup> (33.9sq)



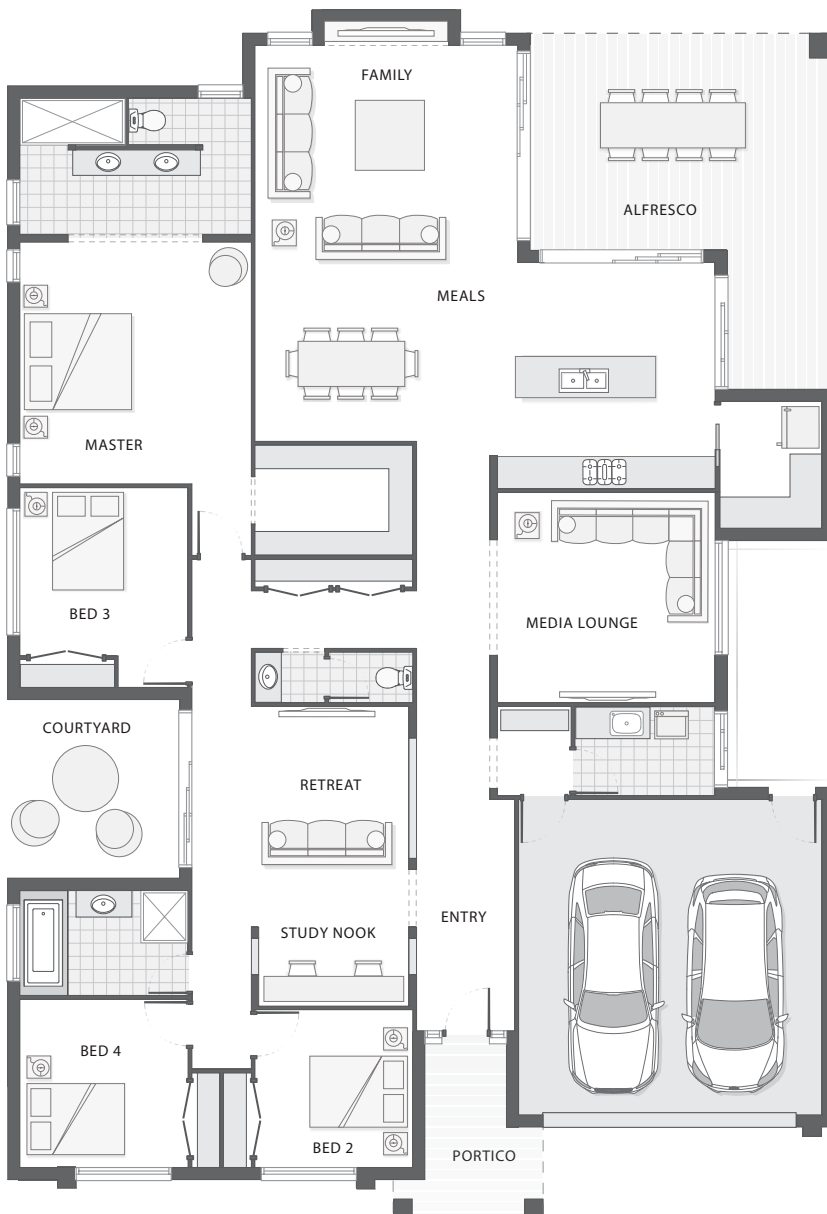
BEXLEY FACADE

4 2 2

The Penn home design is functional and fashionable and provides a clever layout conducive for family living, relaxing and entertaining.

You will feel completely immersed in the outdoors in this home, whether it be as you entertain in the wrap around alfresco area that flows directly into the open plan living space or relaxing in the family retreat overlooking the outdoor courtyard area.

The master retreat is the ideal parent's haven with dual vanity, oversized walk-in-robe and great separation from the remaining bedrooms and living spaces.



## KEY DIMENSIONS

Minimum Lot Width	18.0m
Length	23.0m
Width	15.7m

## ROOM DIMENSIONS (m)

Meals	3.2 x 3.2
Family	5.0 x 4.3
Master Bedroom	4.4 x 4.6
Bedroom 2	3.0 x 3.0
Bedroom 3	3.2 x 3.2
Bedroom 4	3.2 x 3.2
Media/Lounge	4.1 x 4.0
Study	2.9 x 1.9
Retreat	4.1 x 3.1
Alfresco	5.8 x 4.1

## FLOOR AREAS (m<sup>2</sup>)

Indoor Living	241.1
Alfresco	29.2
Garage	38.3
Portico	6.6

# Available facade options for:

PENN HOME DESIGNS



BARCOMB



BEXLEY



BILSON



BYRON



HAVEN



KARIN



LACIE



LENNOX



TAYLOR

This work is exclusively owned by AB Aust IP Pty Ltd (ACN 163 575 077) and cannot be reproduced or copied wholly or in part, in any form without the permission of AB Aust IP Pty Ltd. Plans and designs depicted may change with facade selection. Facade render is indicative and may change with home design. All drawings and images are for illustrative purposes only and rounding has been used. Any prices in this document include GST, relate only to the base home, do not include the supply of items such as landscaping and swimming pools and are subject to change. Minimum lot width is indicative only and is subject to local council regulations and setbacks, buyers should seek confirmation from their local council prior to making any decisions regarding home design on specific lots.

For more details on pricing, home and land packages in your area, inclusions and current offers, please talk to a consultant at one of our many display homes or visit our website, [adenbrookhomes.com.au](http://adenbrookhomes.com.au).