

Saxon

STANDARD DESIGN | 196.4m² (21.1sq)



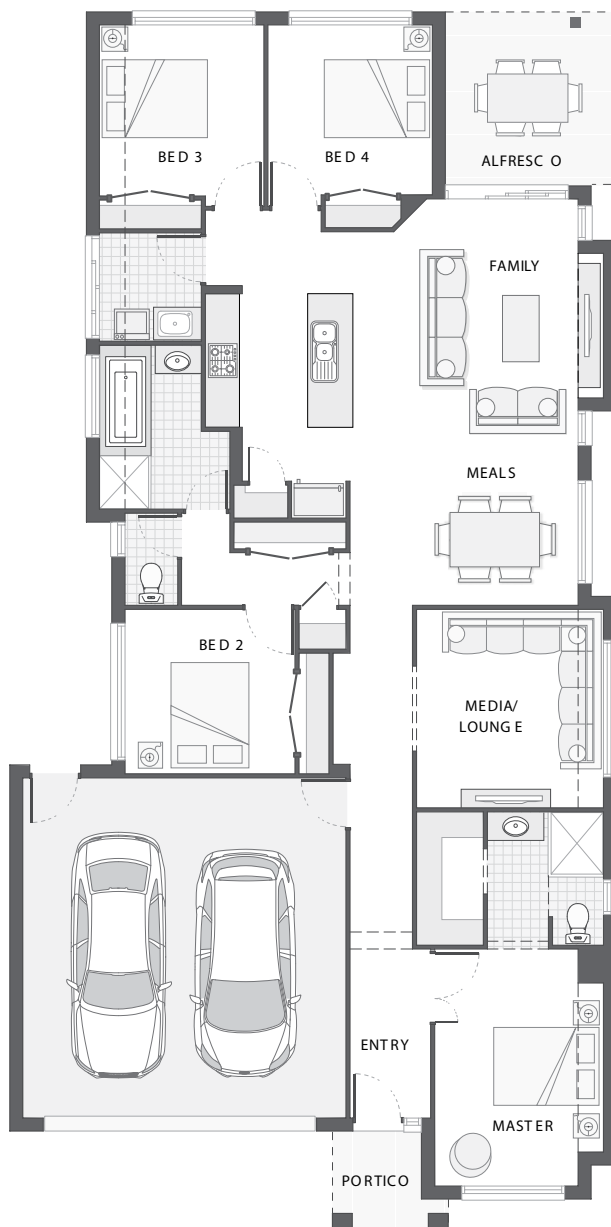
KARIN FACADE

4 2 2

The Saxon home design achieves the perfect balance between compact living and functionality.

The clever design incorporates a central hub for entertaining both indoors and out with the tidy alfresco area adjoining the kitchen, family room and meals zones.

A touch of luxury is added through the separate media or lounge room while all bedrooms are well-appointed to allow separation and privacy. The master retreat includes an ensuite and walk-in-robe to round out a convenient and punchy design.



KEY DIMENSIONS

Minimum Lot Width	12.5m
Length	21.5m
Width	10.7m

ROOM DIMENSIONS (m)

Meals	3.0 x 2.7
Family	3.0 x 4.5
Master Bedroom	3.0 x 4.2
Bedroom 2	3.0 x 2.9
Bedroom 3	2.9 x 3.0
Bedroom 4	2.9 x 3.0
Media/Lounge	3.3 x 3.5
Alfresco	3.0 x 3.1

FLOOR AREAS (m²)

Indoor Living	146.7
Alfresco	9.3
Garage	37.4
Portico	3.1



Available facade options for:

SAXON HOME DESIGNS



PALLARA



BEXLEY



BYRON



HAVEN



KARIN



TAYLOR

This work is exclusively owned by AB Aust IP Pty Ltd (ACN 163 575 077) and cannot be reproduced or copied wholly or in part, in any form without the permission of AB Aust IP Pty Ltd. Plans and designs depicted may change with facade selection. Facade render is indicative and may change with home design. All drawings and images are for illustrative purposes only and rounding has been used. Any prices in this document include GST, relate only to the base home, do not include the supply of items such as landscaping and swimming pools and are subject to change. Minimum lot width is indicative only and is subject to local council regulations and setbacks, buyers should seek confirmation from their local council prior to making any decisions regarding home design on specific lots.

For more details on pricing, home and land packages in your area, inclusions and current offers, please talk to a consultant at one of our many display homes or visit our website, adenbrookhomes.com.au.