

Sorrento

STANDARD DESIGN | 178.2m² (19.2sq)

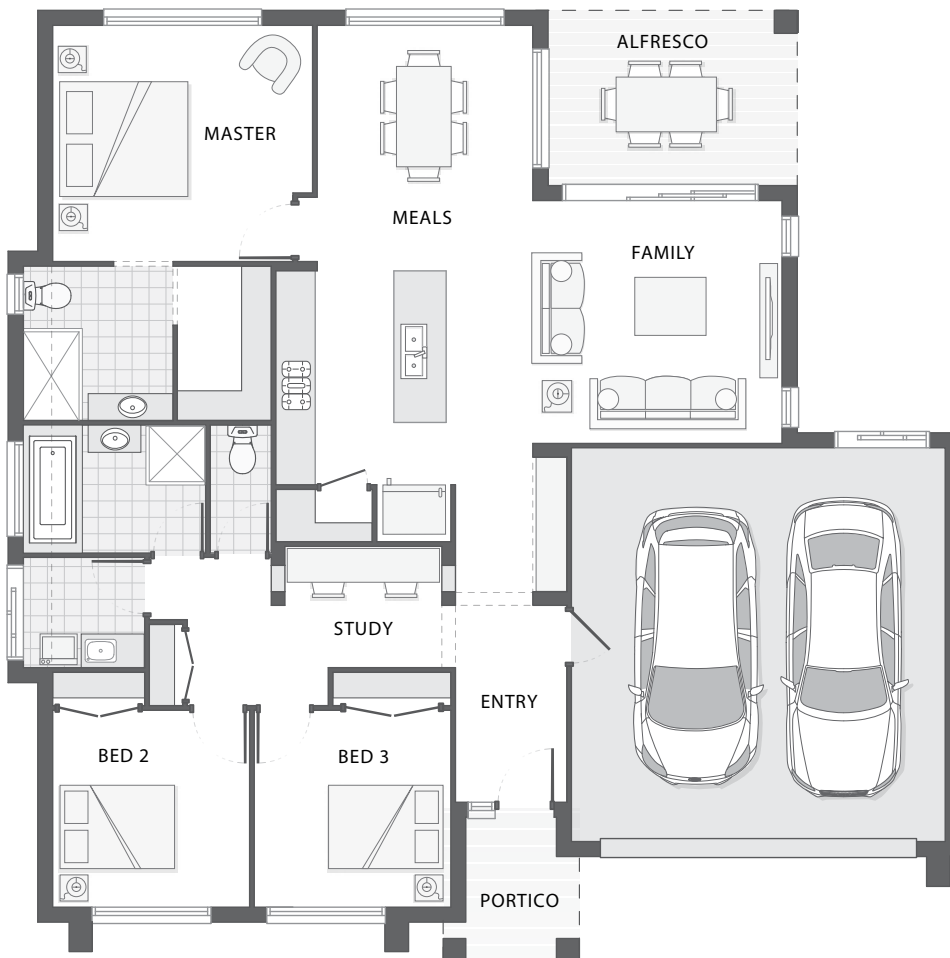


3 2 2

The Sorrento home design is ideal for easy family living on a traditional block.

The clever design boasts a spacious kitchen, open plan meals and family room that flow effortlessly into the alfresco dining area.

The master retreat with ensuite and walk-in-robe is tucked away from the rest of the home providing great privacy and separation. The study nook makes homework easy while the additional bedrooms offer comfort and convenient family living.



KEY DIMENSIONS

Minimum Lot Width	16.0m
Length	14.5m
Width	14.5m

ROOM DIMENSIONS (m)

Meals	3.3 x 3.0
Family	3.8 x 3.7
Master Bedroom	4.0 x 3.6
Bedroom 2	3.0 x 3.0
Bedroom 3	3.0 x 3.0
Study	2.4 x 0.9
Alfresco	3.8 x 2.7

FLOOR AREAS (m²)

Indoor Living	126.5
Alfresco	10.2
Garage	37.4
Portico	3.8

Available facade options for:

SORRENTO HOME DESIGNS



BARCOMB



BEXLEY



BILSON



BYRON



HAVEN



KARIN



LACIE



LENNOX



TAYLOR

This work is exclusively owned by AB Aust IP Pty Ltd (ACN 163 575 077) and cannot be reproduced or copied wholly or in part, in any form without the permission of AB Aust IP Pty Ltd. Plans and designs depicted may change with facade selection. Facade render is indicative and may change with home design. All drawings and images are for illustrative purposes only and rounding has been used. Any prices in this document include GST, relate only to the base home, do not include the supply of items such as landscaping and swimming pools and are subject to change. Minimum lot width is indicative only and is subject to local council regulations and setbacks, buyers should seek confirmation from their local council prior to making any decisions regarding home design on specific lots.

For more details on pricing, home and land packages in your area, inclusions and current offers, please talk to a consultant at one of our many display homes or visit our website, adenbrookhomes.com.au.